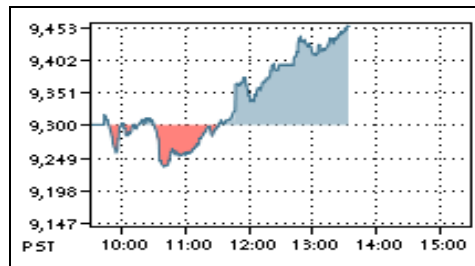




Market Summary

|                                   | KSE      |          | LSE      |          | ISE      |          |
|-----------------------------------|----------|----------|----------|----------|----------|----------|
|                                   | 2-Oct-09 | 1-Oct-09 | 2-Oct-09 | 1-Oct-09 | 1-Oct-09 | 1-Oct-09 |
| Index                             | 9,455.15 | 9,301.18 | 2,912.09 | 2,863.82 | 2,085.67 | 2,050.54 |
| Change                            | 153.97   | (48.50)  | 48.27    | (22.63)  | 35.13    | (5.69)   |
| Intra Day High                    | 9,472.02 | 9,489.72 | 2,919.10 | 2,937.83 | 2,089.94 | 2,089.03 |
| Intra Day Low                     | 9,233.94 | 9,294.36 | 2,841.68 | 2,860.41 | 2,036.82 | 2,045.03 |
| Index Band                        | 238.08   | 195.36   | 77.42    | 77.42    | 53.12    | 44.00    |
| Ready Turnover (Shares. In Min)   | 199.77   | 222.37   | 14.74    | 19.00    | 1.63     | 1.12     |
| Future Turnover (Shares. In Min)  | 4.25     | 1.32     | -        | -        | -        | -        |
| Market. Cap (Rs. In Bin)          | 2,744.37 | 2,702.82 | 2,554.11 | 2,522.20 | 1,538.10 | 1,530.56 |
| Ready Traded Value (Rs. In Bin)   | 10.91    | 9.63     | 0.77     | 0.93     | 0.10     | 0.08     |
| Future Traded Value (Rs. In Bin)  | 0.37     | 0.15     | -        | -        | -        | -        |
| Open Interest Future (Rs. In Bin) | 0.37     | 0.38     | -        | -        | -        | -        |
| # of Trades (000)                 | 120.65   | 119.45   | 10.93    | 12.27    | 1.38     | 1.28     |
| Gainers                           | 227      | 188      | 45       | 29       | 23       | 14       |
| Losers                            | 154      | 235      | 21       | 39       | 12       | 19       |
| Equal                             | 17       | 12       | 50       | 50       | 0        | 1        |



Top 5 Volume Leaders

| KSE   |            |            |             | LSE  |           |            |             | ISE  |         |            |             |
|-------|------------|------------|-------------|------|-----------|------------|-------------|------|---------|------------|-------------|
| Name  | Volume     | Open Price | Close Price | Name | Volume    | Open Price | Close Price | Name | Volume  | Open Price | Close Price |
| KJSCL | 32,526,489 | 38.96      | 40.42       | AHSL | 2,436,272 | 41.98      | 43.34       | AHSL | 335,805 | 41.60      | 43.15       |
| AHSL  | 15,935,231 | 41.92      | 43.34       | NBP  | 893,999   | 83.09      | 83.83       | PTC  | 282,000 | 20.33      | 20.65       |
| PTC   | 10,585,897 | 20.1       | 20.53       | DGKC | 889,170   | 33.7       | 34.38       | DGKC | 175,670 | 33.60      | 34.35       |
| NML   | 7,707,075  | 63.19      | 66.34       | PPTA | 871,503   | 5.61       | 5.76        | BOP  | 144,900 | 14.60      | 14.65       |
| POL   | 7,103,384  | 213.95     | 218.00      | BOP  | 850,020   | 14.79      | 14.79       | NBP  | 90,500  | 82.70      | 83.69       |

Top 5 Scripts (Future Market - KSE)

| Volume Leaders |         |            |             | Open Interest |         |            | Top 5 Price Gainers |         |             |              |
|----------------|---------|------------|-------------|---------------|---------|------------|---------------------|---------|-------------|--------------|
| Name           | Volume  | Open Price | Close Price | Name          | Volume  | Value      | Name                | Volume  | Close Price | Price Change |
| OGDC-OCT       | 735,000 | 107.2      | 108.60      | OGDC-OCT      | 735,000 | 78,799,240 | PSO-OCT             | 77,500  | 326.62      | 13.11        |
| DGKC-OCT       | 576,500 | 33.98      | 34.60       | POL-OCT       | 211,000 | 45,275,180 | MCB-OCT             | 170,000 | 219.31      | 6.06         |
| PTC-OCT        | 374,500 | 20.23      | 20.61       | ENGRO-OCT     | 212,000 | 38,248,350 | POL-OCT             | 211,000 | 217.85      | 4.42         |
| ANL-OCT        | 356,000 | 27.25      | 27.85       | MCB-OCT       | 170,000 | 36,392,270 | PPL-OCT             | 169,500 | 192.17      | 3.86         |
| BAFL-OCT       | 336,000 | 12.51      | 12.65       | PPL-OCT       | 169,500 | 31,867,260 |                     |         |             |              |

Top 10 Index Drivers

| KSE - 100 |            |              |             | LSE - 25 |         |              |             | ISE - 10 |         |              |             |
|-----------|------------|--------------|-------------|----------|---------|--------------|-------------|----------|---------|--------------|-------------|
| Name      | Volume     | Index Points | Close Price | Name     | Volume  | Index Points | Close Price | Name     | Volume  | Index Points | Close Price |
| OGDC      | 4,080,354  | 20.46        | 108.37      | OGDC     | 381,235 | 13.52        | 108.38      | OGDC     | 77,500  | 326.62       | 108.30      |
| PPL       | 2,956,970  | 19.22        | 192.33      | MCB      | 394,226 | 11.16        | 219.00      | PPL      | 21,800  | 11.98        | 193.00      |
| MCB       | 2,630,542  | 16.28        | 218.90      | NBP      | 893,999 | 2.02         | 83.83       | PSO      | 30,292  | 5.91         | 327.50      |
| PSO       | 2,449,913  | 9.96         | 327.64      | PTC      | 766,259 | 4.31         | 20.53       | POL      | 68,086  | 3.86         | 218.05      |
| HBL       | 268,116    | 8.15         | 125.61      | UBL      | 315,987 | 4.60         | 61.23       | PTC      | 282,000 | 2.68         | 20.65       |
| UBL       | 4,301,239  | 6.77         | 61.24       | ENGRO    | 139,103 | 2.70         | 183.73      | NBP      | 90,500  | 1.97         | 83.69       |
| PTC       | 10,585,897 | 6.13         | 104.01      | POL      | 531,149 | 2.45         | 217.67      | FBBL     | 17,000  | 1.45         | 24.20       |
| FFC       | 81,228     | (3.22)       | 148.78      | LUCK     | 233,430 | 1.31         | 75.30       | DGKC     | 175,670 | 0.42         | 34.35       |
| ICI       | 50,619     | (3.24)       | 19.26       | FFBL     | 624,371 | 2.72         | 24.20       | HUBC     | 100     | (0.39)       | 31.00       |
| JSCL      | 402        | (3.83)       | 1177.66     | NIB      | 389,416 | (0.51)       | 5.54        | 0        | 0       | 0.00         | 0.00        |

Intraday Circuit Breakers

|       | KSE      |          | LSE      |          | ISE      |          |
|-------|----------|----------|----------|----------|----------|----------|
|       | 2-Oct-09 | 1-Oct-09 | 2-Oct-09 | 1-Oct-09 | 2-Oct-09 | 1-Oct-09 |
| Upper | 57       | 49       | 4        | 4        | 4        | 3        |
| Lower | 24       | 18       | 5        | 3        | 1        | 2        |

Top 5 Gainers

| KSE  |           |              |             | LSE  |         |              |             | ISE  |        |              |             |
|------|-----------|--------------|-------------|------|---------|--------------|-------------|------|--------|--------------|-------------|
| Name | Volume    | Price Change | Close Price | Name | Volume  | Price Change | Close Price | Name | Volume | Price Change | Close Price |
| SIEM | 3,502     | 60.00        | 1,450.00    | PSO  | 65,097  | 15.44        | 327.9       | PSO  | 30,292 | 15.50        | 327.50      |
| BATA | 3,686     | 46.65        | 1,000.00    | MARI | 13,500  | 12.77        | 268.15      | POL  | 68,086 | 7.35         | 218.05      |
| DREL | 2         | 29.95        | 628.95      | INDU | 4,100   | 8.56         | 179.85      | MCB  | 36,310 | 7.00         | 218.50      |
| MTL  | 70,792    | 20.21        | 424.49      | MCB  | 394,226 | 6.37         | 219         | PPL  | 21,800 | 6.50         | 193.00      |
| PSO  | 2,449,913 | 15.61        | 327.87      | ICI  | 225     | 6.00         | 191         | NML  | 80,500 | 3.07         | 66.30       |

Top 5 Losers

| KSE    |        |              |             | LSE  |         |              |             | ISE  |        |              |             |
|--------|--------|--------------|-------------|------|---------|--------------|-------------|------|--------|--------------|-------------|
| Name   | Volume | Price Change | Close Price | Name | Volume  | Price Change | Close Price | Name | Volume | Price Change | Close Price |
| NESTLE | 402    | (25.00)      | 1175.00     | ATRL | 32,645  | (7.83)       | 148.68      | ATRL | 2,877  | (6.82)       | 148.68      |
| WYETH  | 162    | (16.52)      | 1242.00     | ATBL | 11,600  | (0.56)       | 3.88        | INDU | 400    | (6.24)       | 169.00      |
| ATRL   | 81,228 | (7.83)       | 148.78      | JOVC | 390,705 | (0.51)       | 15.30       | JOVC | 40,600 | (0.50)       | 15.20       |
| GRAYS  | 1      | (6.23)       | 118.52      | SSGC | 99,500  | (0.47)       | 12.99       | PIOC | 499    | (0.40)       | 12.30       |
| AKDCL  | 85,509 | (3.63)       | 92.60       | MYBL | 200,806 | (0.42)       | 5.00        | EPCL | 1,000  | (0.35)       | 21.15       |

WORLD INDICES

| Index          | Level     | YTD Change |
|----------------|-----------|------------|
| KSE 100        | 9,455.15  | 61.21%     |
| SENSEX 30-BSE  | 17,134.55 | 77.61%     |
| SET-THAILAND   | 516.13    | 14.71%     |
| SES ALL-S PORE | 633.29    | 49.86%     |
| Comp-MALAYSIA  | 1,204.02  | 37.33%     |
| DOW JONES      | 9,487.67  | 8.10%      |
| S&P 500 INDEX  | 1,025.21  | 13.50%     |
| NASDAQ COMP    | 2,048.11  | 29.87%     |
| FTSE 100 INDEX | 4,988.70  | 12.51%     |
| NIKKEI 225     | 9,713.73  | 9.64%      |
| HANG SENG-HK   | 20,361.05 | 41.52%     |

SCRA POSITION

Daily Position of Special Convertible Rupee Accounts (USD in Million) - October 02, 2009

| Inflow | Outflow | Net   | Total Monthly | Total Yearly |
|--------|---------|-------|---------------|--------------|
| 27.39  | (6.24)  | 21.15 | 176.74        | 239.30       |

Foreign Investors Portfolio Investment  
October 2, 2009

| Gross Buy<br>Rs. In Million | Gross Sell<br>Rs. In Million | Net Buy / (Sell)<br>Rs. In Million | USD In Million | Current Day US Rate<br>Rs. |
|-----------------------------|------------------------------|------------------------------------|----------------|----------------------------|
| 175.59                      | (315.63)                     | (140.04)                           | (1.68)         | 83.00                      |