

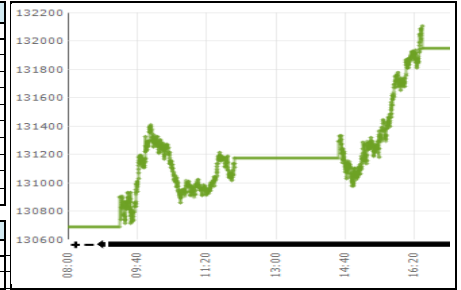


Daily Stock Market Report
4-Jul-25

Stock Market Summary

| KSE-100 | | |
|-----------------------------------|------------|------------|
| | 4-Jul-25 | 3-Jul-25 |
| Index | 131,949.07 | 130,686.66 |
| Change | 1,262.41 | 342.63 |
| Intra Day High | 132,129.60 | 131,325.11 |
| Intra Day Low | 130,716.11 | 129,776.20 |
| Index Band | 1,413.49 | 1,548.91 |
| Ready Turnover (Shares. In Mln) | 733.08 | 899.85 |
| Future Turnover (Shares. In Mln) | 134.89 | 158.38 |
| Market. Cap (Rs. In Bln) | 15910.75 | 15767.14 |
| Ready Traded Value (Rs. In Bln) | 34.94 | 43.25 |
| Future Traded Value (Rs. In Bln) | 6.55 | 9.11 |
| Open Interest Future (Rs. In Bln) | 34.80 | 34.33 |
| Gainers | 255 | 216 |
| Losers | 177 | 236 |
| Equal | 41 | 16 |

| Volume Leaders | | | |
|-------------------|------------|------------|-------------|
| Name | Volume | Open Price | Close Price |
| WorldCall Telecom | 58,256,083 | 1.59 | 1.55 |
| Bank Makramah | 35,806,875 | 5.15 | 5.12 |
| Treet Corp | 29,716,643 | 22.86 | 23.93 |
| Image Pakistan | 25,392,814 | 32.47 | 33.24 |
| Ghani Chemworld | 20,951,565 | 10.78 | 11.86 |
| TRG Pak Ltd | 20,123,832 | 58.24 | 58.76 |
| Kohinoor Spinning | 19,967,719 | 6.04 | 6.18 |
| Ghani Glo Hol | 19,523,404 | 18.69 | 18.77 |
| B.O Punjab | 17,547,639 | 11.52 | 11.66 |
| At-Tahur Ltd. | 16,866,893 | 45.06 | 45.94 |



| Intraday Circuit Breakers | | |
|---------------------------|----------|----------|
| | 4-Jul-25 | 3-Jul-25 |
| Upper | 44 | 39 |
| Lower | 8 | 6 |

Top 10 Index Drivers

| KSE - 100 | | | |
|-----------------|-----------|--------------|-------------|
| Name | Volume | Index Points | Close Price |
| United Bank | 3,748,255 | 517.38 | 327.49 |
| Habib Bank | 4,952,704 | 203.10 | 196.71 |
| Systems Limited | 5,237,125 | 168.43 | 118.04 |
| Bank AL-Habib | 288,502 | 135.30 | 169.98 |
| MCB Bank Ltd | 989,196 | 122.35 | 332.42 |
| National BankXD | 9,040,003 | 80.09 | 120.57 |
| Meezan Bank Ltd | 903,721 | 62.72 | 355.60 |
| Lucky Cement | 962,543 | 50.27 | 353.08 |
| Adamjee Ins. | 7,467,698 | 48.79 | 62.60 |
| Bank Al-Falah | 4,818,340 | 40.35 | 85.34 |

Future Market

| Volume Leaders | | | |
|----------------|------------|------------|-------------|
| Name | Volume | Open Price | Close Price |
| TREET-JUL | 11,439,500 | 23.19 | 24.05 |
| KOSM-JUL | 10,144,500 | 6.26 | 6.24 |
| WTL-JUL | 9,767,500 | 1.61 | 1.57 |
| PIAHCLA-JUL | 9,582,500 | 21.00 | 22.43 |
| TRG-JULB | 8,099,000 | 59.20 | 59.16 |
| IMAGE-JULB | 7,934,000 | 32.90 | 33.47 |
| BML-JUL | 6,837,000 | 5.36 | 5.17 |
| PREMA-JUL | 5,961,500 | 46.48 | 46.26 |
| BOP-JUL | 5,580,000 | 11.55 | 11.73 |
| GGL-JUL | 4,898,000 | 18.98 | 18.86 |

| Open Interest | | |
|---------------|------------|----------------------|
| Name | Volume | Value Rs. In Million |
| OGDC-JULB | 15,916,000 | 3,643.17 |
| PSO-JUL | 6,840,500 | 2,697.48 |
| PPL-JULB | 15,221,500 | 2,639.10 |
| TRG-JULB | 29,485,500 | 1,744.36 |
| DGKC-JUL | 9,155,500 | 1,496.47 |
| NBP-JUL | 11,378,000 | 1,380.95 |
| SSGC-JUL | 29,492,500 | 1,323.33 |
| GHNI-JUL | 1,773,000 | 1,316.90 |
| LUCK-JUL | 2,596,500 | 921.89 |
| SAZEW-JUL | 730,000 | 874.69 |

Top 5 Gainers and Losers

| Gainers | | | |
|----------------------|-----------|--------------|-------------|
| Name | Volume | Price Change | Close Price |
| PIA Holding CompanyB | 175 | 2,151.83 | 23,670.14 |
| Unilever Foods | 15 | 46.99 | 23,646.99 |
| Service Ind.Ltd | 11,857 | 45.14 | 1,247.53 |
| Gandhara Automobile | 3,417,842 | 38.97 | 447.89 |
| Gandhara Ind. | 1,636,995 | 38.41 | 738.08 |

| Losers | | | |
|----------------------|--------|--------------|-------------|
| Name | Volume | Price Change | Close Price |
| Bhanero Tex. | 4,178 | (32.82) | 887.69 |
| Supernet Technologie | 349 | (23.40) | 801.89 |
| Highnoon (Lab) | 13,763 | (13.95) | 993.10 |
| Macter Int. Ltd | 30,589 | (13.75) | 468.25 |
| Bela Automotive | 906 | (10.21) | 111.67 |

Margin Trading System

4-Jul-25

| MTS Trading Data | |
|--------------------------------------|-----------|
| Current Day Turnover (Shares in mln) | 21.66 |
| Current Day Value (Rs. in mln) | 1,331.62 |
| MTS open Position (Rs in mln) | 13,030.07 |
| MTS Release Position (Rs in mln) | 942.53 |
| MTS unrelease Position (Rs in mln) | 11,702.95 |
| Avg Rate | 15% |

| Volume Leaders | | | |
|----------------|-----------|----------------------|----------|
| Name | Volume | Value Rs. In Million | Avg Rate |
| BOP | 2,779,222 | 27.22 | 14% |
| HUMNL | 2,647,578 | 29.36 | 15% |
| UNIBY | 2,048,690 | 43.03 | 14% |
| AKBL | 1,725,027 | 85.30 | 15% |
| SEARL | 1,671,253 | 144.82 | 16% |

| Open Interest | | |
|---------------|------------|----------------------|
| Scrip | Volume | Value Rs. In Million |
| PSO | 3,588,903 | 1,147.79 |
| NBP | 12,273,299 | 1,108.75 |
| HBL | 5,015,648 | 725.80 |
| OGDC | 3,791,628 | 700.99 |
| PPL | 4,987,425 | 695.86 |

International Commodity Prices

| Contract Name | Price | Change in Price USD |
|------------------------|----------|---------------------|
| Gold 100 OZ (USD/t oz) | 3,307.40 | (33.98) |
| COTTON (USD/lb) | 68.46 | 0.00 |
| WTI CRUDE (USD/bbl) | 66.03 | (0.85) |
| SILVER (USD/t oz) | 36.96 | (0.11) |

Daily Position of Special Convertible Rupee Accounts (USD in Mn)
June 13, 2025

| Inflow | Outflow | Net | Current Month Cumulative Net Flow | Total Yearly (July 2024 to-date) |
|--------|---------|------|-----------------------------------|----------------------------------|
| 11.60 | 6.40 | 5.20 | (18.64) | (585.71) |

WORLD INDICES

| Index | Level | YTD Change |
|----------------------|------------|------------|
| KSE 100 | 131,949.07 | 14.61% |
| S&P BSE SENSEX INDEX | 83,487.63 | 6.88% |
| SET-THAILAND | 720.88 | -20.45% |
| SES All-S' PORE | 920.55 | 5.85% |
| FTSE Bursa MALAYSIA | 1,537.83 | -6.36% |
| DOW JONES | 44,828.53 | 5.37% |
| S&P 500 INDEX | 6,279.35 | 6.76% |
| NASDAQ COMP | 20,601.10 | 6.68% |
| FTSE 100 INDEX | 8,822.91 | 7.95% |
| NIKKEI 225 | 39,643.15 | -0.63% |
| HANG SENG-HK | 23,808.91 | 18.69% |

Portfolio Investment
4-Jul-25

| Investors' Type | Gross Buy Rs. In Million | Gross Sell Rs. In Million | Net Buy/Sell Rs. In Million | USD in Million |
|----------------------------|--------------------------|---------------------------|-----------------------------|----------------|
| Foreigners | 2,440.00 | (3,095.00) | (656.00) | (2.00) |
| NBFC | 23.00 | (8.00) | 15.00 | - |
| Companies | 1,774.00 | (1,601.00) | 173.00 | 1.00 |
| Banks/DFI | 834.00 | (1,837.00) | (1,003.00) | (4.00) |
| Individuals | 29,654.00 | (29,087.00) | 566.00 | 2.00 |
| Mutual Funds | 3,063.00 | (2,650.00) | 413.00 | 1.00 |
| Others | 164.00 | (358.00) | (194.00) | (1.00) |
| INSURANCE COMPANIES | 318.00 | (417.00) | (99.00) | - |
| BROKER PROPRIETARY TRADING | 5,040.00 | (4,256.00) | 784.00 | 3.00 |

Exchange Rates (Interbank)
3-Jul-25

| | |
|--------------------|--------|
| US Dollar (PKR/\$) | 283.97 |
| UK Pound (PKR/£) | 388.01 |
| Euro (PKR/€) | 334.39 |