



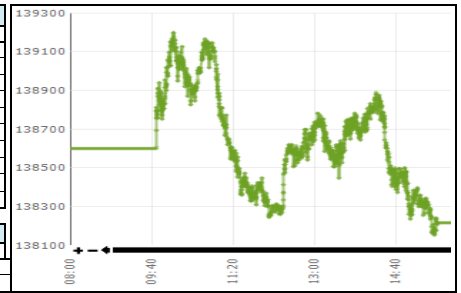
Daily Stock Market Report 21-Jul-25

LISTED COMPANIES DEPARTMENT
SUPERVISION DIVISION

Stock Market Summary

| KSE-100 | | |
|-----------------------------------|------------|------------|
| | 21-Jul-25 | 18-Jul-25 |
| Index | 138,217.58 | 138,597.36 |
| Change | -379.78 | -68.14 |
| Intra Day High | 139,201.16 | 140,585.39 |
| Intra Day Low | 138,149.57 | 138,343.73 |
| Index Band | 1,051.59 | 2,241.66 |
| Ready Turnover (Shares. In Mln) | 608.19 | 609.44 |
| Future Turnover (Shares. In Mln) | 215.63 | 99.91 |
| Market. Cap (Rs. In Bln) | 16505.02 | 16517.17 |
| Ready Traded Value (Rs. In Bln) | 23.52 | 31.62 |
| Future Traded Value (Rs. In Bln) | 14.41 | 5.73 |
| Open Interest Future (Rs. In Bln) | 40.31 | 37.72 |
| Gainers | 193 | 120 |
| Losers | 245 | 331 |
| Equal | 41 | 27 |

| Volume Leaders | | | |
|--------------------|------------|------------|-------------|
| Name | Volume | Open Price | Close Price |
| Prud Mod.1st | 58,737,418 | 4.50 | 4.98 |
| K-Electric Ltd. | 53,175,405 | 5.31 | 5.43 |
| Pak Int.Bulk | 51,735,265 | 10.14 | 10.06 |
| Waves Corp Ltd. | 27,871,498 | 8.23 | 8.96 |
| Dewan Farooque Sp. | 24,127,221 | 8.18 | 7.50 |
| WorldCall Telecom | 19,758,898 | 1.49 | 1.47 |
| First Dawood Prop | 17,985,731 | 6.93 | 6.64 |
| Ghani Glo Hol | 16,285,249 | 19.51 | 20.64 |
| B.O.Punjab | 14,937,494 | 12.74 | 12.69 |
| Pervez Ahmed Co | 12,907,792 | 2.91 | 3.10 |



| Intraday Circuit Breakers | | |
|---------------------------|-----------|-----------|
| | 21-Jul-25 | 18-Jul-25 |
| Upper | 38 | 27 |
| Lower | 11 | 15 |

Top 10 Index Drivers

| KSE - 100 | | | |
|--------------------|-----------|--------------|-------------|
| Name | Volume | Index Points | Close Price |
| Fauji Fert | 1,430,727 | -197.83 | 462.63 |
| United BankXD | 697,674 | -116.04 | 369.52 |
| Oil & Gas Dev | 2,493,261 | -45.29 | 221.18 |
| Systems Limited | 1,042,647 | -39.86 | 118.11 |
| Hub Power Co. | 1,316,076 | -38.86 | 146.86 |
| Bank AL-Habib | 353,796 | -35.63 | 164.63 |
| Pakgen Power | 1,952 | -22.89 | 157.86 |
| National BankXD | 4,005,608 | -18.40 | 123.87 |
| Attock Refinery | 718,254 | -18.38 | 666.33 |
| Mail Energies Ltd. | 435,536 | -16.62 | 618.04 |

Future Market

| Volume Leaders | | | |
|----------------|------------|------------|-------------|
| Name | Volume | Open Price | Close Price |
| BOP-JUL | 10,179,000 | 12.82 | 12.72 |
| WTL-JUL | 7,969,500 | 1.50 | 1.48 |
| NBP-AUG | 7,933,500 | 125.50 | 125.79 |
| NBP-JUL | 7,923,500 | 124.99 | 124.22 |
| WTL-AUG | 7,634,500 | 1.52 | 1.49 |
| PIBTL-JUL | 6,994,000 | 10.02 | 10.09 |
| UNITY-AUG | 6,840,000 | 26.50 | 26.79 |
| UNITY-JUL | 6,093,500 | 25.92 | 26.47 |
| BOP-AUG | 5,621,500 | 13.65 | 12.85 |
| PIBTL-AUG | 4,903,500 | 10.48 | 10.19 |

| Open Interest | | |
|---------------|------------|----------------------|
| Name | Volume | Value Rs. In Million |
| OGDC-JULB | 14,163,500 | 3,141.75 |
| PSO-JUL | 6,443,500 | 2,458.90 |
| DGKC-JUL | 10,732,500 | 1,842.13 |
| PPL-JULB | 10,660,000 | 1,741.42 |
| TRG-JULB | 30,111,000 | 1,670.86 |
| GHNI-JUL | 1,887,500 | 1,447.26 |
| NBP-JUL | 11,204,000 | 1,391.76 |
| SSGC-JUL | 25,278,500 | 1,115.79 |
| MLCF-JUL | 12,363,000 | 1,031.07 |
| NBP-AUG | 7,860,500 | 988.77 |

Top 5 Gainers and Losers

| Gainers | | | |
|-----------------|---------|--------------|-------------|
| Name | Volume | Price Change | Close Price |
| Unilever Foods | 98 | 988.00 | 25,498.00 |
| Nestle Pakistan | 529 | 86.97 | 7,400.00 |
| Rafhan Maize | 92 | 74.59 | 9,533.93 |
| Khyber Textile | 534 | 55.56 | 1,455.21 |
| Sitara Chemical | 190,165 | 39.04 | 550.38 |

| Losers | | | |
|----------------------|--------|--------------|-------------|
| Name | Volume | Price Change | Close Price |
| PIA Holding CompanyB | 16 | -3,446.15 | 31,015.32 |
| Bata (Pak) Ltd. | 2,643 | -35.44 | 1,650.89 |
| Faisal Spinning | 2,578 | -24.97 | 401.05 |
| Tandlianwala Sugar | 101 | -23.09 | 250.81 |
| Macter Int. Ltd | 72,331 | -17.81 | 382.07 |

Margin Trading System 21-Jul-25

| MTS Trading Data | |
|--------------------------------------|-----------|
| Current Day Turnover (Shares in mln) | 21.47 |
| Current Day Value (Rs. in mln) | 1,354.66 |
| MTS open Position (Rs in mln) | 14,314.21 |
| MTS Release Position (Rs in mln) | 1,010.09 |
| MTS unrelease Position (Rs in mln) | 12,996.17 |
| Avg Rate | 13% |

| Volume Leaders | | | |
|----------------|-----------|----------------------|----------|
| Name | Volume | Value Rs. In Million | Avg Rate |
| AKBL | 5,272,004 | 306.93 | 13% |
| BOP | 2,788,183 | 30.13 | 13% |
| KEL | 1,350,532 | 6.24 | 14% |
| TPLP | 1,310,116 | 11.03 | 18% |
| CNERGY | 1,167,733 | 6.93 | 13% |

| Open Interest | | |
|---------------|------------|----------------------|
| Scrip | Volume | Value Rs. In Million |
| HLB | 7,035,064 | 1,201.91 |
| NBP | 11,044,076 | 1,069.61 |
| UBL | 3,723,990 | 992.19 |
| PSO | 3,092,019 | 988.33 |
| AKBL | 16,347,316 | 894.34 |

International Commodity Prices

| Contract Name | Price | Change in Price USD |
|------------------------|----------|---------------------|
| Gold 100 OZ (USD/t oz) | 3,389.58 | 31.70 |
| COTTON (USD/lb) | 68.05 | -0.52 |
| WTI CRUDE (USD/bbl) | 66.60 | -0.91 |
| SILVER (USD/t oz) | 39.11 | 0.58 |

Daily Position of Special Convertible Rupee Accounts (USD in Mn) July 4, 2025

| Inflow | Outflow | Net | Current Month Cumulative Net Flow | Total Yearly (July 2024 to-date) |
|--------|---------|------|-----------------------------------|----------------------------------|
| 0.03 | 0.00 | 0.03 | 2.80 | 2.80 |

WORLD INDICES

| Index | Level | YTD Change |
|----------------------|------------|------------|
| KSE 100 | 138,217.58 | 20.06% |
| S&P BSE SENSEX INDEX | 82,377.44 | -0.13% |
| SET-THAILAND | 786.72 | 4.04% |
| SES All-S' PORE | 960.10 | 1.69% |
| FTSE Bursa MALAYSIA | 1,519.52 | 0.12% |
| DOW JONES | 44,323.07 | 0.68% |
| S&P 500 INDEX | 6,305.60 | 0.99% |
| NASDAQ COMP | 20,974.18 | 1.48% |
| FTSE 100 INDEX | 9,012.99 | 0.84% |
| NIKKEI 225 | 39,622.00 | -0.60% |
| HANG SENG-HK | 25,057.11 | 1.62% |

Portfolio Investment 21-Jul-25

| Investors' Type | Gross Buy Rs. In Million | Gross Sell Rs. In Million | Net Buy/Sell Rs. In Million | USD in Million |
|----------------------------|--------------------------|---------------------------|-----------------------------|----------------|
| Foreigners | 2,192.05 | (3,007.85) | (815.80) | (2.86) |
| NBFC | 36.26 | (43.13) | (6.87) | (0.02) |
| Companies | 3,907.93 | (4,080.92) | (172.98) | (0.61) |
| Banks/DFI | 634.74 | (441.02) | 193.71 | 0.68 |
| Individuals | 24,185.56 | (23,229.09) | 956.47 | 3.36 |
| Mutual Funds | 1,341.83 | (1,228.10) | 113.73 | 0.40 |
| Others | 302.82 | (455.13) | (152.30) | (0.53) |
| INSURANCE COMPANIES | 524.41 | (736.25) | (211.85) | (0.74) |
| BROKER PROPRIETARY TRADING | 5,236.09 | (5,200.19) | 35.90 | 0.34 |

Exchange Rates (Interbank) 21-Jul-25

| | |
|--------------------|--------|
| US Dollar (PKR/\$) | 284.95 |
| UK Pound (PKR/£) | 383.05 |
| Euro (PKR/€) | 331.66 |

Data Source:
Pakistan Stock Exchange
State Bank of Pakistan
National Clearing Company of Pakistan Limited
www.bloomberg.com