

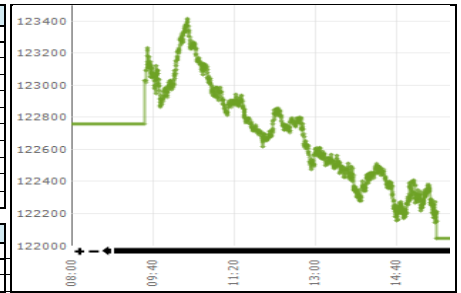


Daily Stock Market Report
26-Jun-25

Stock Market Summary

KSE-100		
	26-Jun-25	25-Jun-25
Index	122,046.46	122,761.64
Change	(715.18)	515.00
Intra Day High	123,417.87	123,256.55
Intra Day Low	122,142.43	122,168.76
Index Band	1,275.44	1,087.79
Ready Turnover (Shares. In Mln)	758.54	749.80
Future Turnover (Shares. In Mln)	339.59	354.27
Market. Cap (Rs. In Bln)	14796.01	14858.64
Ready Traded Value (Rs. In Bln)	29.93	28.03
Future Traded Value (Rs. In Bln)	15.57	19.99
Open Interest Future (Rs. In Bln)	42.40	38.98
Gainers	274	274
Losers	161	161
Equal	37	37

Volume Leaders			
Name	Volume	Open Price	Close Price
Pak Int.Bulk	37,503,501	8.58	8.52
WorldCall Telecom	33,285,442	1.49	1.45
Pervez Ahmed Co	32,962,174	3.04	3.29
Sui South Gas	32,894,753	41.63	42.47
K-Electric Ltd.	25,498,723	5.25	5.07
Hum Network	25,370,672	12.71	12.90
Barkat Frisian Agro	19,820,236	33.92	36.40
Pak Refinery	18,738,171	35.27	34.04
Invest Bank	18,636,163	8.81	9.81
Dewan Farooque Sp.	18,457,835	6.79	7.26



Intraday Circuit Breakers		
	26-Jun-25	25-Jun-25
Upper	50	110
Lower	9	12

Top 10 Index Drivers

KSE - 100			
Name	Volume	Index Points	Close Price
Bank AL-Habib	375,407	(116.30)	152.77
Lucky Cement	1,506,811	(94.95)	341.28
Habib Bank	2,044,629	(88.30)	169.10
Pak Services	1,753	(63.12)	849.03
Systems Limited	1,298,613	(44.34)	104.81
Habib Metropolitan	241,273	(41.79)	94.34
Bank Al-Falah	1,068,053	(41.30)	77.80
Mari Energies Ltd.	1,071,488	(40.23)	623.08
MCB Bank Ltd	367,365	(40.09)	279.80
Fatima Fert	703,741	(39.82)	93.72

Future Market

Volume Leaders			
Name	Volume	Open Price	Close Price
SSGC-JUL	16,056,000	42.39	42.89
TRG-JUNB	14,012,500	54.75	52.98
KEL-JUL	13,140,000	5.33	5.11
TRG-JULB	12,619,000	54.80	53.35
SSGC-JUN	11,550,500	41.80	42.60
TPLP-JUN	9,826,000	9.52	9.49
TPLP-JUL	9,207,000	9.50	9.56
WTL-JUN	8,505,500	1.49	1.46
UNITY-JUL	8,389,500	24.64	25.29
KEL-JUN	8,201,000	5.25	5.09

Open Interest		
Name	Volume	Value Rs. In Million
OGDC-JULB	14,687,000	3,220.71
PSO-JUL	5,333,000	2,046.33
PPL-JULB	12,025,000	2,041.36
OGDC-JUNB	7,049,500	1,535.38
TRG-JULB	26,529,000	1,415.32
PPL-JUNB	8,042,000	1,354.51
DGKC-JUL	8,026,000	1,331.03
PSO-JUN	3,317,000	1,261.85
NBP-JUL	9,793,000	1,050.20
TRG-JUNB	19,044,000	1,008.95

Top 5 Gainers and Losers

Gainers			
Name	Volume	Price Change	Close Price
PIA Holding CompanyB	6	1,214.65	13,361.18
S.S.Oil	120,322	71.57	787.28
Hoechst Pak Ltd	190	60.08	3,250.08
Sitara Chemical	160,070	36.99	481.99
Thal Ind.Corp.	1,507	32.66	401.66

Losers			
Name	Volume	Price Change	Close Price
Ismail Ind-	16	(125.74)	1,804.26
Pak Services	1,753	(77.38)	849.03
Nestle Pakistan	23	(70.65)	6,976.85
Unilever Foods	31	(60.67)	23,396.83
Macter Int. Ltd	27,100	(32.91)	529.58

Margin Trading System

26-Jun-25

MTS Trading Data	
Current Day Turnover (Shares in mln)	19.12
Current Day Value (Rs. in mln)	1,055.28
MTS open Position (Rs in mln)	11,330.28
MTS Release Position (Rs in mln)	610.04
MTS unrelease Position (Rs in mln)	10,275.64
Avg Rate	15%

Volume Leaders			
Name	Volume	Value Rs. In Million	Avg Rate
HUMNL	2,540,798	28.18	15%
PRL	2,040,220	59.24	17%
BOP	2,020,125	17.58	15%
PTC	1,871,807	38.15	17%
UNITY	1,375,117	29.25	0%

Open Interest		
Scrip	Volume	Value Rs. In Million
PSO	3,740,913	1162.28
NBP	10,890,016	920.21
OGDC	3,853,237	687.10
UBL	2,947,436	670.45
PPL	4,834,798	646.17

International Commodity Prices

Contract Name	Price	Change in Price USD
Gold 100 OZ (USD/t oz)	3,296.35	(39.93)
COTTON (USD/lb)	68.81	0.29
WTI CRUDE (USD/bbl)	65.62	0.49
SILVER (USD/t oz)	36.74	0.07

Daily Position of Special Convertible Rupee Accounts (USD in Mn)
June 13, 2025

Inflow	Outflow	Net	Current Month Cumulative Net Flow	Total Yearly (July 2024 to-date)
11.60	6.40	5.20	(18.64)	(585.71)

WORLD INDICES

Index	Level	YTD Change
KSE 100	122,046.46	6.01%
S&P BSE SENSEX INDEX	83,759.44	7.23%
SET-THAILAND	709.57	-21.70%
SES All-S' PORE	906.31	4.21%
FTSE Bursa MALAYSIA	1,528.16	-6.95%
DOW JONES	43,386.84	1.98%
S&P 500 INDEX	6,141.02	4.41%
NASDAQ COMP	20,167.91	4.44%
FTSE 100 INDEX	8,735.60	6.88%
NIKKEI 225	40,187.56	0.73%
HANG SENG-HK	24,309.68	21.19%

Portfolio Investment

26-Jun-25

Investors' Type	Gross Buy Rs. In Million	Gross Sell Rs. In Million	Net Buy/Sell Rs. In Million	USD in Million
Foreigners	3,064.00	(4,031.00)	(967.00)	(3.00)
NBFC	62.00	(26.00)	36.00	-
Companies	2,162.00	(2,555.00)	(393.00)	(1.00)
Banks/DFI	3,825.00	(3,701.00)	123.00	-
Individuals	32,862.00	(30,517.00)	2,345.00	8.00
Mutual Funds	7,117.00	(9,013.00)	(1,896.00)	(7.00)
Others	1,149.00	(1,485.00)	(336.00)	(1.00)
INSURANCE COMPANIES	1,202.00	(319.00)	883.00	3.00
BROKER PROPRIETARY TRADING	7,455.00	(7,251.00)	204.00	1.00

Exchange Rates (Interbank)

26-Jun-25

US Dollar (PKR/\$)	283.67
UK Pound (PKR/£)	390.04
Euro (PKR/€)	332.67