

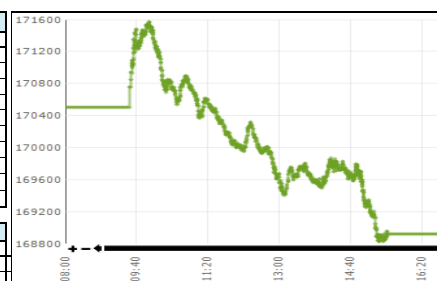


Daily Stock Market Report  
12-May-26

Stock Market Summary

| KSE-100                           |            |            |
|-----------------------------------|------------|------------|
|                                   | 12-May-26  | 11-May-26  |
| Index                             | 168,916.22 | 170,506.31 |
| Change                            | -1,590.09  | -609.51    |
| Intra Day High                    | 171,571.56 | 171,304.11 |
| Intra Day Low                     | 168,823.32 | 169,583.45 |
| Index Band                        | 2,748.24   | 1,720.66   |
| Ready Turnover (Shares. In Mln)   | 1,017.42   | 1,103.30   |
| Future Turnover (Shares. In Mln)  | 192.93     | 228.27     |
| Market. Cap (Rs. In Bln)          | 18685.23   | 18869.95   |
| Ready Traded Value (Rs. In Bln)   | 32.03      | 31.04      |
| Future Traded Value (Rs. In Bln)  | 7.06       | 9.06       |
| Open Interest Future (Rs. In Bln) | 31.24      | 32.40      |
| Gainers                           | 106        | 234        |
| Losers                            | 346        | 215        |
| Equal                             | 33         | 39         |

| Volume Leaders    |             |            |             |
|-------------------|-------------|------------|-------------|
| Name              | Volume      | Open Price | Close Price |
| Cnergyco PK       | 154,128,151 | 8.66       | 8.81        |
| Hascol Petrol     | 113,570,988 | 24.73      | 22.32       |
| K-Electric Ltd.   | 107,548,005 | 8.95       | 8.57        |
| TPL Corp Ltd      | 67,870,089  | 10.88      | 11.15       |
| Agha Steel Ind.   | 34,899,418  | 8.91       | 8.27        |
| WorldCall Telecom | 29,763,728  | 1.35       | 1.35        |
| Pak Int.Bulk      | 22,945,695  | 17.46      | 16.89       |
| B.O.Punjab        | 22,931,678  | 35.53      | 34.91       |
| Fauji Foods Ltd   | 20,914,638  | 18.77      | 17.96       |
| Kohinoor Spinning | 19,721,312  | 5.85       | 5.95        |



| Intraday Circuit Breakers |           |           |
|---------------------------|-----------|-----------|
|                           | 12-May-26 | 11-May-26 |
| Upper                     | 35        | 44        |
| Lower                     | 17        | 8         |

Top 10 Index Drivers

| KSE - 100         |           |              |             |
|-------------------|-----------|--------------|-------------|
| Name              | Volume    | Index Points | Close Price |
| United Bank       | 1,374,381 | -181.64      | 399.55      |
| Lucky Cement      | 708,151   | -120.26      | 428.30      |
| Engro Holdings    | 827,316   | -119.52      | 272.79      |
| Habib Bank        | 1,470,691 | -89.81       | 291.71      |
| Hub Power Co.XD   | 1,320,599 | -57.12       | 213.81      |
| Systems LimitedXD | 1,213,738 | -55.92       | 153.49      |
| Maple Leaf        | 7,735,072 | -55.68       | 83.89       |
| National Bank     | 3,417,030 | -51.15       | 186.73      |
| MCB Bank LtdXD    | 194,625   | -46.96       | 399.83      |
| D.G.K.Cement      | 5,333,361 | -46.85       | 180.50      |

| Volume Leaders |            |            |             |
|----------------|------------|------------|-------------|
| Name           | Volume     | Open Price | Close Price |
| CNERGY-MAY     | 50,898,000 | 8.61       | 8.86        |
| KEL-MAY        | 24,281,000 | 9.05       | 8.62        |
| BOP-MAYB       | 11,349,000 | 35.94      | 35.10       |
| AGHA-MAY       | 8,033,500  | 9.30       | 8.36        |
| KOSM-MAY       | 7,900,000  | 5.95       | 5.97        |
| TPLP-MAY       | 6,819,500  | 8.70       | 8.61        |
| PIBITL-MAY     | 6,441,000  | 17.78      | 16.97       |
| PIACHLA-MAY    | 5,470,500  | 25.80      | 25.08       |
| CNERGY-JUN     | 5,128,000  | 9.00       | 9.00        |
| FFL-MAY        | 4,745,000  | 18.99      | 18.06       |

| Open Interest |            |                      |
|---------------|------------|----------------------|
| Name          | Volume     | Value Rs. In Million |
| TRG-MAY       | 42,143,500 | 2,845.95             |
| OGDC-MAYB     | 6,817,500  | 2,233.82             |
| BOP-MAYB      | 52,578,000 | 1,845.49             |
| PSO-MAY       | 4,184,000  | 1,499.55             |
| NBP-MAYB      | 7,314,500  | 1,373.52             |
| PPL-MAYB      | 5,493,000  | 1,258.94             |
| DGKC-MAY      | 6,501,000  | 1,179.93             |
| SEARL-MAY     | 10,338,500 | 928.29               |
| CNERGY-MAY    | 91,054,000 | 806.74               |
| PAEL-MAY      | 20,441,500 | 806.21               |

Top 5 Gainers and Losers

| Gainers              |        |              |             |
|----------------------|--------|--------------|-------------|
| Name                 | Volume | Price Change | Close Price |
| Khairpur Sugar       | 27,156 | 98.38        | 1,082.21    |
| Premium Tex          | 5,776  | 32.00        | 500.00      |
| Tandlianwala Sugar   | 3,271  | 27.60        | 367.60      |
| Rafhan Maize         | 168    | 26.77        | 9,572.86    |
| D.M. Corporation Ltd | 1,792  | 18.56        | 254.74      |

| Losers               |         |              |             |
|----------------------|---------|--------------|-------------|
| Name                 | Volume  | Price Change | Close Price |
| PIA Holding Co.(B)   | 4       | -599.00      | 18,801.00   |
| Unilever FoodsXD     | 11      | -324.00      | 26,268.00   |
| Nestle Pakistan      | 243     | -115.82      | 7,615.76    |
| Sazgar EngineeringXD | 309,511 | -57.70       | 2,172.33    |
| Hafiz Limited        | 109     | -29.67       | 385.33      |

Margin Trading System  
12-May-26

| MTS Trading Data                     |           |
|--------------------------------------|-----------|
| Current Day Turnover (Shares in mln) | 22.43     |
| Current Day Value (Rs. in mln)       | 1,187.72  |
| MTS open Position (Rs in mln)        | 15,800.28 |
| MTS Release Position (Rs in mln)     | 1,196.23  |
| MTS unrelease Position (Rs in mln)   | 14,678.29 |
| Avg Rate                             | 13%       |

| Volume Leaders |            |                      |          |
|----------------|------------|----------------------|----------|
| Name           | Volume     | Value Rs. In Million | Avg Rate |
| KEL            | 10,386,756 | 75.76                | 13%      |
| PIBITL         | 2,008,989  | 28.89                | 15%      |
| BOP            | 1,621,023  | 48.21                | 13%      |
| NBP            | 1,061,293  | 168.66               | 13%      |
| OGDC           | 715,192    | 198.55               | 13%      |

| Open Interest |            |                      |  |
|---------------|------------|----------------------|--|
| Scrip         | Volume     | Value Rs. In Million |  |
| NBP           | 10,088,197 | 1,532.16             |  |
| BOP           | 51,181,723 | 1,440.65             |  |
| HBL           | 4,364,038  | 1,055.17             |  |
| OGDC          | 3,934,894  | 1,051.28             |  |
| PSO           | 2,816,596  | 847.03               |  |

| International Commodity Prices |          |                     |
|--------------------------------|----------|---------------------|
| Contract Name                  | Price    | Change in Price USD |
| Gold 100 OZ (USD/t oz)         | 4,697.54 | -25.83              |
| COTTON (USD/lb)                | 86.96    | 2.35                |
| WTI CRUDE (USD/bbl)            | 100.90   | 2.16                |
| SILVER (USD/t oz)              | 87.34    | 0.28                |

| Daily Position of Special Convertible Rupee Accounts (USD in Mn)<br>April 30, 2026 |         |      |                                   |                                  |
|--|---------|------|-----------------------------------|----------------------------------|
| Inflow   | Outflow | Net  | Current Month Cumulative Net Flow | Total Yearly (July 2025 to-date) |
| 4.78   | 4.19    | 0.59 | 37.17                             | -493.51                          |

| WORLD INDICES        |            |            |  |
|----------------------|------------|------------|--|
| Index                | Level      | YTD Change |  |
| KSE 100              | 168,916.22 | -2.95%     |  |
| S&P BSE SENSEX INDEX | 74,486.56  | -12.81%    |  |
| SET-THAILAND         | 987.66     | 18.19%     |  |
| SES All-S'PORE       | 1,141.41   | 7.64%      |  |
| FTSE Bursa MALAYSIA  | 1,743.43   | 3.77%      |  |
| DOW JONES            | 49,760.56  | 3.53%      |  |
| S&P 500 INDEX        | 7,400.96   | 8.11%      |  |
| NASDAQ COMP          | 26,089.20  | 12.25%     |  |
| FTSE 100 INDEX       | 10,265.32  | 3.36%      |  |
| NIKKEI 225           | 63,185.07  | 25.52%     |  |
| HANG SENG-HK         | 26,416.98  | 3.07%      |  |

| Portfolio Investment<br>12-May-26 |                          |                           |                             |                |
|-----------------------------------|--------------------------|---------------------------|-----------------------------|----------------|
| Investors' Type                   | Gross Buy Rs. In Million | Gross Sell Rs. In Million | Net Buy/Sell Rs. In Million | USD in Million |
| Banks/DFI                         | 425.65                   | (365.74)                  | 59.91                       | 0.21           |
| BROKER PROPRIETARY TRADING        | 4,517.42                 | (3,949.88)                | 567.54                      | 2.03           |
| Companies                         | 619.70                   | (1,034.00)                | (414.30)                    | (1.48)         |
| Individuals                       | 30,951.36                | (30,931.53)               | 19.83                       | 0.07           |
| INSURANCE COMPANIES               | 137.40                   | (219.90)                  | (82.50)                     | (0.30)         |
| Mutual Funds                      | 945.03                   | (1,424.35)                | (479.32)                    | (1.72)         |
| NBFC                              | 10.17                    | (2.48)                    | 7.69                        | 0.03           |
| Other Organizations               | 92.72                    | (51.99)                   | 40.73                       | 0.15           |
| Foreigner                         | 2,859.61                 | (2,579.19)                | 280.42                      | 1.01           |

| Money Market Rates - Offer |        |
|----------------------------|--------|
| KIBOR (Six Months)         | 12.06% |

| Exchange Rates (Interbank)<br>12-May-26 |        |
|---|--------|
| US Dollar (PKR/\$)                      | 278.66 |
| UK Pound (PKR/£)                        | 376.46 |
| Euro (PKR/€)                            | 327.26 |

Data Source:  
Pakistan Stock Exchange  
State Bank of Pakistan  
National Clearing Company of Pakistan Limited  
www.bloomberg.com