

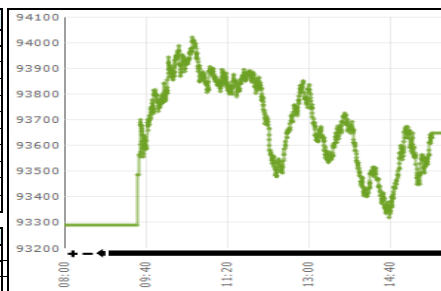


Daily Stock Market Report  
11-Nov-24

Stock Market Summary

| KSE-100                           |           |           |
|-----------------------------------|-----------|-----------|
|                                   | 11-Nov-24 | 08-Nov-24 |
| Index                             | 93,648.33 | 93,291.68 |
| Change                            | 356.65    | 771.19    |
| Intra Day High                    | 94,020.03 | 93,514.56 |
| Intra Day Low                     | 93,318.91 | 92,566.49 |
| Index Band                        | 701.12    | 948.07    |
| Ready Turnover (Shares. In Mln)   | 815.19    | 763.26    |
| Future Turnover (Shares. In Mln)  | 159.04    | 150.55    |
| Market. Cap (Rs. In Bln)          | 12055.61  | 11977.60  |
| Ready Traded Value (Rs. In Bln)   | 37.32     | 30.21     |
| Future Traded Value (Rs. In Bln)  | 10.47     | 7.18      |
| Open Interest Future (Rs. In Bln) | 24.14     | 23.59     |
| Gainers                           | 227       | 243       |
| Losers                            | 184       | 146       |
| Equal                             | 43        | 57        |

| Volume Leaders     |            |            |             |
|--------------------|------------|------------|-------------|
| Name               | Volume     | Open Price | Close Price |
| Energyco PK        | 98,601,408 | 4.12       | 4.52        |
| Pak Elektron       | 78,094,188 | 26.86      | 29.01       |
| K-Electric Ltd.    | 70,187,495 | 4.84       | 4.98        |
| WorldCall Telecom  | 31,959,599 | 1.27       | 1.27        |
| B.O Punjab         | 30,732,112 | 6.76       | 6.70        |
| The Searle Company | 25,361,739 | 71.32      | 78.45       |
| Citi Pharma Ltd    | 22,856,315 | 45.04      | 49.14       |
| Sui South Gas      | 22,691,678 | 17.02      | 18.72       |
| Pak Refinery       | 16,427,996 | 25.08      | 25.00       |
| Fauji Foods Ltd    | 14,553,457 | 10.63      | 10.47       |



| Intraday Circuit Breakers |           |           |
|---------------------------|-----------|-----------|
|                           | 11-Nov-24 | 08-Nov-24 |
| Upper                     | 44        | 34        |
| Lower                     | 10        | 13        |

Top 10 Index Drivers

| KSE - 100          |            |              |             |
|--------------------|------------|--------------|-------------|
| Name               | Volume     | Index Points | Close Price |
| Oil & Gas Dev.XD   | 10,975,597 | 130.90       | 197.64      |
| Pak PetroleumXD    | 10,241,549 | 89.00        | 154.16      |
| Abbott Lab.        | 217,827    | 60.08        | 984.72      |
| The Searle Company | 25,361,739 | 59.39        | 78.45       |
| GlaxoSmithKline    | 1,668,800  | 59.37        | 314.78      |
| Colgate Palm       | 42,929     | 44.85        | 1,393.01    |
| Service Ind.Ltd    | 6,376      | 42.89        | 1,206.06    |
| AGP Limited        | 713,639    | 39.89        | 160.36      |
| Highnoon (Lab)     | 151,120    | 34.82        | 898.49      |
| Pak Elektron       | 78,094,188 | 29.97        | 29.01       |

Future Market

| Volume Leaders |            |            |             |
|----------------|------------|------------|-------------|
| Name           | Volume     | Open Price | Close Price |
| PAEL-NOV       | 20,961,500 | 27.25      | 29.17       |
| CNERGY-NOV     | 13,171,500 | 4.25       | 4.57        |
| SEARL-NOV      | 10,924,500 | 72.51      | 79.01       |
| TRG-NOV        | 7,710,000  | 52.00      | 53.77       |
| KEL-NOV        | 7,576,500  | 4.86       | 5.02        |
| BOP-NOV        | 6,745,000  | 7.00       | 6.73        |
| SSGC-NOV       | 5,999,500  | 17.48      | 18.89       |
| ATRL-NOVB      | 5,712,000  | 501.50     | 474.50      |
| PRL-NOVB       | 5,672,500  | 25.46      | 25.20       |
| KOSM-NOV       | 5,244,500  | 7.84       | 7.48        |

| Open Interest |            |                      |
|---------------|------------|----------------------|
| Name          | Volume     | Value Rs. In Million |
| OGDC-NOVC     | 12,003,000 | 2,387.28             |
| TRG-NOV       | 36,471,000 | 1,961.05             |
| SAZEW-NOVC    | 1,512,500  | 1,663.46             |
| PPL-NOVC      | 9,361,000  | 1,454.79             |
| HUBC-NOVB     | 9,663,000  | 1,076.17             |
| PSO-NOVB      | 4,164,500  | 1,045.33             |
| AIRLINK-NOVB  | 6,089,000  | 784.75               |
| PAEL-NOV      | 25,067,000 | 731.20               |
| ATRL-NOVB     | 1,364,500  | 647.46               |
| UNITY-NOV     | 21,286,500 | 574.31               |

Top 5 Gainers and Losers

| Gainers           |         |              |             |
|-------------------|---------|--------------|-------------|
| Name              | Volume  | Price Change | Close Price |
| Rafhan MaizeXD    | 720     | 211.95       | 7,522.00    |
| Abbott Lab.       | 217,827 | 87.42        | 984.72      |
| Bhanero Tex.      | 60      | 78.12        | 860.17      |
| Haleon PakistanXD | 258,691 | 68.80        | 756.84      |
| Pak Engineering   | 750     | 67.04        | 775.00      |

| Losers           |         |              |             |
|------------------|---------|--------------|-------------|
| Name             | Volume  | Price Change | Close Price |
| Ismail Ind-      | 118     | -87.46       | 1,515.54    |
| Sapphire Fiber   | 44      | -60.29       | 1,129.08    |
| Unilever FoodsXD | 43      | -52.99       | 19,047.00   |
| Khyber Textile   | 200     | -46.87       | 485.01      |
| Sazgar EngXD     | 404,654 | -25.46       | 1,091.00    |

Margin Trading System  
11-Nov-24

| MTS Trading Data                     |          |
|--------------------------------------|----------|
| Current Day Turnover (Shares in mln) | 25.70    |
| Current Day Value (Rs. in mln)       | 1,351.64 |
| MTS open Position (Rs in mln)        | 8,154.04 |
| MTS Release Position (Rs in mln)     | 1,156.23 |
| MTS unrelease Position (Rs in mln)   | 6,810.48 |
| Avg Rate                             | 20%      |

| Volume Leaders |           |                      |          |
|----------------|-----------|----------------------|----------|
| Name           | Volume    | Value Rs. In Million | Avg Rate |
| CNERGY         | 4,800,198 | 18.64                | 20%      |
| PAEL           | 3,426,164 | 78.26                | 19%      |
| OGDC           | 2,088,692 | 340.00               | 18%      |
| SNGP           | 1,454,087 | 104.12               | 19%      |
| PRL            | 1,396,964 | 29.80                | 20%      |

| Open Interest |            |                      |
|---------------|------------|----------------------|
| Scrip         | Volume     | Value Rs. In Million |
| OGDC          | 10,609,760 | 1556.04              |
| PSO           | 2,891,680  | 570.73               |
| HUBC          | 5,980,370  | 538.35               |
| HBL           | 3,776,645  | 412.22               |
| DGKC          | 4,825,135  | 347.06               |

International Commodity Prices

| Contract Name          | Price    | Change in Price USD |
|------------------------|----------|---------------------|
| Gold 100 OZ (USD/t oz) | 2,619.49 | -51.24              |
| COTTON (USD/lb)        | 69.71    | -1.22               |
| WTI CRUDE (USD/bbl)    | 71.64    | -1.98               |
| SILVER (USD/t oz)      | 30.67    | -0.65               |

Daily Position of Special Convertible Rupee Accounts (USD in Mn)  
October 18, 2024

| Inflow | Outflow | Net   | Current Month Cumulative Net Flow | Total Yearly (July 2024 to-date) |
|--------|---------|-------|-----------------------------------|----------------------------------|
| 0.42   | 1.92    | -1.50 | 28.67                             | 201.84                           |

WORLD INDICES

| Index                | Level     | YTD Change |
|----------------------|-----------|------------|
| KSE 100              | 93,648.33 | 49.95%     |
| S&P BSE SENSEX INDEX | 79,767.94 | 10.42%     |
| SET-THAILAND         | 933.38    | 6.64%      |
| SES All-S PORE       | 854.68    | 12.10%     |
| FTSE Bursa MALAYSIA  | 1,609.86  | 10.67%     |
| DOW JONES            | 44,293.13 | 17.52%     |
| S&P 500 INDEX        | 6,001.35  | 25.82%     |
| INSDAQ COMP          | 19,298.77 | 28.56%     |
| FTSE 100 INDEX       | 8,125.19  | 5.07%      |
| NIKKEI 225           | 39,577.78 | 18.27%     |
| HANG SENG-HK         | 20,104.91 | 17.94%     |

Portfolio Investment  
11-Nov-24

| Investors' Type            | Gross Buy Rs. In Million | Gross Sell Rs. In Million | Net Buy/Sell Rs. In Million | USD in Million |
|----------------------------|--------------------------|---------------------------|-----------------------------|----------------|
| Foreigners                 | 3,655.55                 | (3,673.77)                | (18.23)                     | (0.07)         |
| NBFC                       | 28.13                    | (43.68)                   | (15.56)                     | (0.06)         |
| Companies                  | 926.84                   | (2,171.86)                | (1,245.02)                  | (4.48)         |
| Banks/DFI                  | 1,210.45                 | (922.57)                  | 287.88                      | 1.04           |
| Individuals                | 34,757.77                | (34,212.27)               | 545.50                      | 1.96           |
| Mutual Funds               | 3,067.04                 | (2,671.32)                | 395.71                      | 1.42           |
| Others                     | 217.15                   | (208.44)                  | 8.71                        | 0.03           |
| INSURANCE COMPANIES        | 636.71                   | (852.50)                  | (215.79)                    | (0.78)         |
| BROKER PROPRIETARY TRADING | 5,673.10                 | (6,416.31)                | (743.21)                    | -2.71          |

Exchange Rates (Interbank)  
11-Nov-24

|                    |        |
|--------------------|--------|
| US Dollar (PKR/\$) | 277.86 |
| UK Pound (PKR/£)   | 358.26 |
| Euro (PKR/€)       | 297.02 |

| Money Market Rates - Offer |        |
|----------------------------|--------|
| KIBOR (Six Months)         | 13.34% |