

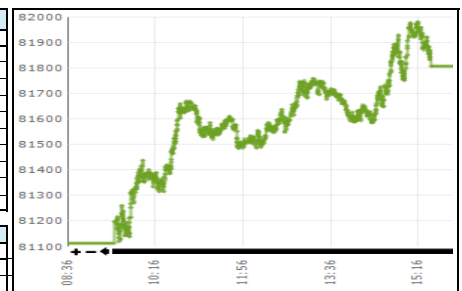


Daily Stock Market Report
01-Oct-24

Stock Market Summary

KSE-100		
	01-Oct-24	30-Sep-24
Index	81,804.59	81,114.20
Change	690.39	-177.93
Intra Day High	81,980.37	81,321.64
Intra Day Low	81,119.24	80,352.22
Index Band	861.13	969.42
Ready Turnover (Shares. In Mn)	359.08	297.99
Future Turnover (Shares. In Mn)	81.07	85.09
Market. Cap (Rs. In Bin)	10712.21	10619.51
Ready Traded Value (Rs. In Bin)	17.16	14.10
Future Traded Value (Rs. In Bin)	4.26	3.63
Open Interest Future (Rs. In Bin)	21.24	20.54
Gainers	243	132
Losers	139	244
Equal	54	68

Volume Leaders			
Name	Volume	Open Price	Close Price
Fauji Cement	29,125,856	25.28	26.62
Hub Power Co.XD	19,621,123	119.34	126.47
WorldCall Telecom	19,051,954	1.20	1.24
Kohinoor Spinning	15,724,680	8.11	8.63
K-Electric Ltd.	11,491,569	3.76	3.87
TRG Pak Ltd	11,178,959	48.90	48.29
PIA Holding Company	8,820,495	18.74	18.46
Maple Leaf	8,816,537	32.44	33.69
Pace (Pak) Ltd.	8,360,881	5.20	5.52
Fatima Fert	7,256,168	59.55	61.11



Intraday Circuit Breakers		
	01-Oct-24	30-Sep-24
Upper	24	19
Lower	9	23

Top 10 Index Drivers

KSE - 100			
Name	Volume	Index Points	Close Price
Hub Power Co.XD	19,621,123	221.53	126.47
Mari Petroleum	3,192,218	173.01	448.10
Oil & Gas Dev.	5,724,789	53.98	146.05
Bank AL-Habib	309,011	46.71	100.58
Pak Petroleum	3,126,778	37.77	108.59
Fauji Cement	29,125,856	36.74	26.62
Service Ind.Ltd	27,268	35.70	1,231.40
D.G.K.Cement	5,913,617	20.92	76.49
Pioneer Cement	318,095	19.42	187.15
Maple Leaf	8,816,537	18.82	33.69

Future Market

Volume Leaders			
Name	Volume	Open Price	Close Price
KOSM-OCT	9,428,000	8.31	8.72
TRG-OCT	7,660,500	46.10	48.77
HUBC-OCTB	6,787,500	121.80	126.54
PIAHCLA-OCT	4,342,500	18.99	18.67
WTL-OCT	3,458,000	1.21	1.26
AGL-OCT	3,150,000	34.24	37.52
PACE-OCT	2,819,000	5.15	5.58
FCCL-OCTB	2,643,000	24.89	26.03
LOTCEM-OCT	2,637,500	16.10	16.22
DGKC-OCT	2,406,500	74.78	77.35

Open Interest		
Name	Volume	Value Rs. In Million
OGDC-OCTB	16,768,500	2,424.39
TRG-OCT	35,535,500	1,733.07
AIRLINK-OCTB	11,690,500	1,552.26
SAZEV-OCTB	1,448,000	1,437.56
HUBC-OCTB	8,576,500	1,085.27
PPL-OCT	9,387,000	1,012.39
FATIMA-OCTB	14,095,000	868.82
PAEL-OCT	24,756,000	638.46
UNITY-OCT	22,225,500	572.97
DFML-OCT	11,905,500	571.34

Top 5 Gainers and Losers

Gainers			
Name	Volume	Price Change	Close Price
Unilever Foods	37	194.94	17,270.00
Hallmark Company Ltd	1,935	78.42	1,116.73
Hoechst Pak Ltd	149	58.17	2,058.17
Service Ind.Ltd	27,268	52.87	1,231.40
Sazgar Eng	307,231	26.25	988.84

Losers			
Name	Volume	Price Change	Close Price
Pak Engineering	344	-55.00	755.00
Sitara Chemical	250	-14.92	270.08
Ismail Ind-XD	16	-10.82	1,792.57
Siemens Pak.	1,031	-8.75	456.47
Pak Oilfields	281,106	-7.56	617.37

Margin Trading System

1-Oct-24

MTS Trading Data	
Current Day Turnover (Shares in mln)	19.25
Current Day Value (Rs. in mln)	800.19
MTS open Position (Rs in mln)	7,199.38
MTS Release Position (Rs in mln)	707.05
MTS unrelease Position (Rs in mln)	6,401.41
Avg Rate	19%

Volume Leaders			
Name	Volume	Value Rs. In Million	Avg Rate
KEL	5,000,628	16.10	21%
HUBC	2,645,413	286.32	21%
MLCF	2,203,074	62.47	19%
CNERGY	1,150,138	3.71	21%
OGDC	999,763	123.83	19%

Open Interest		
Scrip	Volume	Value Rs. In Million
OGDC	10,996,933	1,324.79
HUBC	7,237,398	757.98
HBL	4,359,164	451.69
AIRLINK	3,343,676	361.54
NBP	6,806,610	331.33

International Commodity Prices

Contract Name	Price	Change in Price USD
Gold 100 OZ (USD/t oz)	2,655.89	17.59
COTTON (USD/lb)	72.81	-0.58
WTI CRUDE (USD/bbl)	70.86	2.57
SILVER (USD/t oz)	31.59	0.03

Daily Position of Special Convertible Rupee Accounts (USD in Mn)

1-Oct-24

Inflow	Outflow	Net	Current Month Cumulative Net Flow	Total Yearly (July 2024 to-date)
0.27	2.84	-2.57	48.96	182.44

WORLD INDICES

Index	Level	YTD Change
KSE 100	81,804.59	30.99%
S&P BSE SENSEX INDEX	84,266.29	16.65%
SET-THAILAND	923.62	5.53%
SES All-S' PORE	835.21	9.55%
FTSE Bursa MALAYSIA	1,639.02	12.67%
DOW JONES	42,156.97	11.85%
S&P 500 INDEX	5,708.75	19.68%
NASDAQ COMP	17,910.36	19.31%
FTSE 100 INDEX	8,276.65	7.03%
NIKKEI 225	38,090.67	13.83%
HANG SENG-HK	22,396.66	31.38%

Portfolio Investment

1-Oct-24

Investors' Type	Gross Buy Rs. In Million	Gross Sell Rs. In Million	Net Buy/Sell Rs. In Million	USD in Million
Foreigners	2,997.69	(4,377.98)	(1,380.28)	(4.98)
NBFC	1.64	(2.69)	(1.06)	(0.00)
Companies	690.78	(919.19)	(228.41)	(0.82)
Banks/DFI	517.33	(465.71)	51.62	0.19
Individuals	13,792.13	(13,988.32)	(196.19)	(0.71)
Mutual Funds	3,187.54	(672.69)	2,514.85	9.08
Others	143.39	(103.88)	39.52	0.14
INSURANCE COMPANIES	379.97	(1,297.50)	(917.53)	(3.31)
BROKER PROPRIETARY TRADING	2,608.94	(2,491.45)	117.48	0.42

Money Market Rates - Offer

KIBOR (Six Months)	15.09%
--------------------	--------

Exchange Rates (Interbank)

1-Oct-24

US Dollar (PKR/\$)	277.69
UK Pound (PKR/£)	370.39
Euro (PKR/€)	308.64

Data Source:
Pakistan Stock Exchange
State Bank of Pakistan
National Clearing Company of Pakistan Limited
www.bloomberg.com