



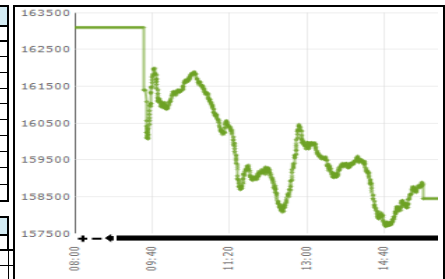
## Daily Stock Market Report 13-Oct-25

LISTED COMPANIES DEPARTMENT  
SUPERVISION DIVISION

### Stock Market Summary

KSE-100		
	13-Oct-25	10-Oct-25
Index	158,443.42	163,098.19
Change	-4,654.77	-1,432.62
Intra Day High	161,988.13	165,262.86
Intra Day Low	157,678.02	162,411.26
Index Band	4,310.11	2,851.60
Ready Turnover (Shares. In Mln)	1,365.70	1,401.25
Future Turnover (Shares. In Mln)	304.31	270.55
Market. Cap (Rs. In Bln)	18376.98	18910.91
Ready Traded Value (Rs. In Bln)	62.47	47.79
Future Traded Value (Rs. In Bln)	20.93	0.00
Open Interest Future (Rs. In Bln)	55.25	55.64
Gainers	74	145
Losers	375	302
Equal	33	32

Volume Leaders			
Name	Volume	Open Price	Close Price
K-Electric Ltd.	197,267,193	7.13	6.85
B.O.Punjab	97,205,745	32.07	31.78
WorldCall Telecom	75,239,120	1.73	1.67
TPL Properties	60,714,431	11.83	11.66
Ist.Capital Sec	55,874,694	6.30	6.67
P.T.C.L.	52,423,003	37.25	36.64
F. Nat.Equities	48,382,383	12.62	11.42
Pace (Pak) Ltd.	46,463,420	18.40	19.18
Cnergyco PK	44,902,590	8.27	7.83
Unity Foods Ltd	30,340,002	23.81	26.19



Intraday Circuit Breakers			
	13-Oct-25	10-Oct-25	
Upper	26	34	
Lower	10	11	

### Top 10 Index Drivers

KSE - 100			
Name	Volume	Index Points	Close Price
Bank AL-Habib	196,356	-278.66	195.25
Engro Holdings	4,980,229	-258.15	232.77
Lucky Cement	2,567,586	-249.99	431.38
Oil & Gas Dev	7,675,950	-240.81	252.84
Mari Energies Ltd.	3,106,012	-233.86	703.07
Meezan Bank Ltd	1,920,374	-224.66	430.35
Pak Petroleum	17,452,681	-217.70	180.19
Fauji Fert	3,481,489	-200.45	474.04
Systems Limited	3,946,911	-192.25	149.99
Hub Power Co.XD	16,419,448	-168.10	205.65

### Future Market

Volume Leaders			
Name	Volume	Open Price	Close Price
BOP-OCTB	36,813,500	31.50	31.96
PACE-OCT	36,409,500	18.89	19.23
KEL-OCT	26,062,000	7.01	6.90
PTC-OCT	21,472,500	37.50	36.90
TPLP-OCT	16,129,500	11.89	11.77
UNITY-OCT	11,084,000	25.00	26.43
CNERGY-OCT	10,718,500	7.99	7.90
WTL-OCT	10,583,000	1.76	1.69
BML-OCT	10,414,500	7.75	7.29
THCL-OCT	9,182,000	87.37	95.39

Open Interest		
Name	Volume	Value Rs. In Million
PSO-OCTB	12,243,000	5,625.66
NBP-OCT	24,596,500	4,915.86
OGDC-OCT	14,513,000	3,698.78
TRG-OCT	38,973,500	2,869.62
PSO-OCT	4,763,000	2,201.36
BOP-OCTB	64,430,000	2,069.18
PAEL-OCT	37,846,500	2,006.24
GHNI-OCTB	1,718,500	1,493.87
HUBC-OCT	7,047,500	1,462.14
PPL-OCT	6,985,000	1,263.31

### Top 5 Gainers and Losers

Gainers			
Name	Volume	Price Change	Close Price
Supernet Technologie	4,872	179.93	2,028.92
Gillette Pak	2,793	41.33	454.64
D.M. Corporation Ltd	1,706	23.69	260.60
Shahtaj Sugar	32,291	15.40	169.40
Karam Ceramics	509	13.26	174.01

Losers			
Name	Volume	Price Change	Close Price
Unilever Foods	105	-491.47	29,358.53
Rafhan Maize	146	-352.05	9,526.94
Hoechst Pak Ltd	4,678	-187.03	3,908.83
Nestle Pakistan	385	-168.56	8,135.86
PIA Holding CompanyB	21	-143.95	24,550.10

### Margin Trading System 13-Oct-25

MTS Trading Data	
Current Day Turnover (Shares in mln)	58.31
Current Day Value (Rs. in mln)	3,063.04
MTS open Position (Rs in mln)	21,703.47
MTS Release Position (Rs in mln)	2,052.18
MTS unrelease Position (Rs in mln)	18,942.48
Avg Rate	14%

Volume Leaders			
Name	Volume	Value Rs. In Million	Avg Rate
KEL	16,307,642	95.46	17%
BOP	10,227,544	276.54	15%
PTC	6,209,074	192.14	13%
PAEL	2,992,389	134.55	14%
HUBC	1,880,083	327.59	13%

Open Interest			
Scrip	Volume	Value Rs. In Million	
NBP	11,743,037	1,907.60	
PSO	4,876,673	1,897.69	
BOP	71,852,187	1,723.31	
HUBC	9,151,825	1,570.45	
PAEL	25,025,390	1,119.89	

### International Commodity Prices

Contract Name	Price	Change in Price USD
Gold 100 OZ (USD/t oz)	4,165.61	110.00
COTTON (USD/lb)	63.49	-0.44
WTI CRUDE (USD/bbl)	59.71	-0.05
SILVER (USD/t oz)	52.24	2.90

### Daily Position of Special Convertible Rupee Accounts (USD in Mn) October 03, 2025

Inflow	Outflow	Net	Current Month Cumulative Net Flow	Total Yearly (July 2025 to-date)
39.72	3.40	36.32	9.28	-125.67

### WORLD INDICES

Index	Level	YTD Change
KSE 100	158,443.42	37.63%
S&P BSE SENSEX INDEX	82,499.30	5.62%
SET-THAILAND	830.82	-8.32%
SES All-S'PORE	1,004.45	15.50%
FTSE Bursa MALAYSIA	1,619.84	-1.37%
DOW JONES	46,067.58	8.28%
S&P 500 INDEX	6,654.72	13.14%
NASDAQ COMP	22,694.81	17.52%
FTSE 100 INDEX	9,442.87	15.54%
NIKKEI 225	47,288.44	18.53%
HANG SENG-HK	25,810.83	28.67%

### Portfolio Investment 13-Oct-25

Investors' Type	Gross Buy Rs. In Million	Gross Sell Rs. In Million	Net Buy/Sell Rs. In Million	USD in Million
Foreigners	5,729.23	(5,112.05)	617.18	2.18
NBFC	37.12	(6.27)	30.85	0.11
Companies	12,530.30	(8,517.19)	4,013.11	14.18
Banks/DFI	4,145.97	(2,091.25)	2,054.72	7.26
Individuals	60,830.06	(58,320.05)	2,510.00	8.87
Mutual Funds	3,653.81	(13,243.26)	(9,589.45)	(33.89)
Others	420.63	(582.37)	(161.74)	(0.57)
INSURANCE COMPANIES	1,113.52	(139.72)	973.81	3.44
BROKER PROPRIETARY TRADING	9,378.42	(9,827.90)	(449.48)	(1.58)

### Money Market Rates - Offer

KIBOR (Six Months)	11.17%
--------------------	--------

### Exchange Rates (Interbank) 13-Oct-25

US Dollar (PKR/₹)	281.16
UK Pound (PKR/£)	374.88
Euro (PKR/€)	326.16

Data Source:  
Pakistan Stock Exchange  
State Bank of Pakistan  
National Clearing Company of Pakistan Limited  
www.bloomberg.com