



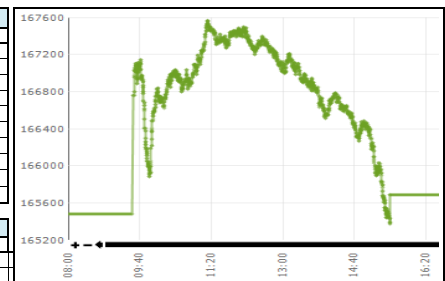
## Daily Stock Market Report 15-Oct-25

LISTED COMPANIES DEPARTMENT  
SUPERVISION DIVISION

### Stock Market Summary

KSE-100		
	15-Oct-25	14-Oct-25
Index	165,686.38	165,476.02
Change	210.36	7,032.60
Intra Day High	167,561.69	165,866.78
Intra Day Low	165,357.21	160,821.73
Index Band	2,204.48	5,045.05
Ready Turnover (Shares. In Mln)	1,528.36	1,179.99
Future Turnover (Shares. In Mln)	321.79	319.89
Market Cap (Rs. In Bln)	19178.47	19105.75
Ready Traded Value (Rs. In Bln)	68.60	59.20
Future Traded Value (Rs. In Bln)	17.09	19.73
Open Interest Future (Rs. In Bln)	56.86	55.73
Gainers	249	391
Losers	204	69
Equal	36	23

Volume Leaders			
Name	Volume	Open Price	Close Price
K-Electric Ltd.	383,103,314	7.11	7.65
B.O.Punjab	142,130,321	34.63	35.53
WorldCall Telecom	116,447,451	1.71	1.74
P.T.C.L.	71,820,999	37.05	37.96
Telecard Limited	55,326,702	10.15	10.31
Pace (Pak) Ltd.	30,702,140	18.60	20.46
F. Nat. Equities	30,420,279	12.06	12.37
Ist.Capital Sec	25,938,283	6.76	6.92
Energyco PK	25,358,633	8.24	8.14
Pak Int.Bulk	24,748,555	14.87	14.97



Intraday Circuit Breakers			
	15-Oct-25	14-Oct-25	
Upper	36	47	
Lower	6	10	

### Top 10 Index Drivers

KSE - 100			
Name	Volume	Index Points	Close Price
Fauji Fert	3,445,854	149.06	482.44
Meezan Bank Ltd	1,376,376	136.92	458.36
Mari Enegies Ltd.	13,207,476	116.57	759.74
Bank Al-Falah	12,149,051	94.35	116.06
Pak Services	5,575	77.86	980.50
MCB Bank Ltd	780,548	65.31	371.77
National BankXD	12,605,213	60.91	210.57
Faysal Bank	6,924,396	58.08	93.94
Sui North Gas	9,298,468	50.40	132.85
K-Electric Ltd.	383,103,314	50.06	7.65

### Future Market

Volume Leaders			
Name	Volume	Open Price	Close Price
KEL-OCT	59,859,500	7.27	7.70
BOP-OCTB	43,825,000	35.50	35.82
PTC-OCT	29,568,500	37.85	38.19
TELE-OCT	15,364,000	10.28	10.42
PACE-OCT	14,662,000	19.30	20.71
WTL-OCT	12,149,500	1.72	1.77
PIBTL-OCT	8,934,500	15.25	15.08
TPLP-OCT	8,139,500	11.90	11.92
PLL-OCT	6,473,500	189.10	183.91
TREET-OCT	6,281,000	29.71	29.35

Open Interest		
Name	Volume	Value Rs. In Million
PSO-OCTB	12,111,000	5,806.62
NBP-OCT	24,722,500	5,250.81
OGDC-OCT	13,007,500	3,402.24
TRG-OCT	39,039,000	2,973.21
BOP-OCTB	71,015,000	2,543.76
PAEL-OCT	38,448,500	2,174.26
GHNI-OCTB	1,833,500	1,615.57
DGKC-OCTB	5,736,000	1,406.70
HUBC-OCTB	6,343,500	1,390.94
ATRL-OCTB	1,792,500	1,237.83

### Top 5 Gainers and Losers

Gainers			
Name	Volume	Price Change	Close Price
Hoechst Pak Ltd	1,286	144.26	4,154.50
Nestle Pakistan	1,543	132.86	8,335.00
Rafhan Maize	59	93.49	9,707.33
Pak Services	5,575	89.14	980.50
Gillette Pak	883	50.01	550.11

Losers			
Name	Volume	Price Change	Close Price
PIA Holding CompanyB	148	-89.33	24,550.22
Khyber Textile	49	-70.69	1,897.13
Supernet Technologie	1,360	-35.12	1,899.28
Ismail Ind.XD	31	-33.16	2,100.01
Sazgar Engineering	270,401	-16.67	1,907.27

### Margin Trading System 15-Oct-25

MTS Trading Data	
Current Day Turnover (Shares in mln)	79.17
Current Day Value (Rs. in mln)	3,351.70
MTS open Position (Rs in mln)	22,779.43
MTS Release Position (Rs in mln)	3,133.74
MTS unrelease Position (Rs in mln)	19,408.09
Avg Rate	14%

Volume Leaders			
Name	Volume	Value Rs. In Million	Avg Rate
KEL	30,438,047	197.78	15%
BOP	14,013,275	425.08	13%
PTC	4,829,207	155.63	13%
TELE	3,798,245	33.42	18%
NBP	3,304,961	592.89	16%

Open Interest			
Scrip	Volume	Value Rs. In Million	
NBP	14,307,789	2,391.69	
BOP	81,054,897	2,069.99	
PSO	4,516,354	1,774.84	
HUBC	9,067,936	1,575.67	
PAEL	24,154,752	1,096.11	

International Commodity Prices		
Contract Name	Price	Change in Price USD
Gold 100 OZ (USD/t oz)	4,186.69	21.08
COTTON (USD/lb)	63.81	0.32
WTI CRUDE (USD/bbl)	58.88	-0.83
SILVER (USD/t oz)	52.38	0.14

Daily Position of Special Convertible Rupee Accounts (USD in Mn) October 10, 2025				
Inflow	Outflow	Net	Current Month Cumulative Net Flow	Total Yearly (July 2025 to-date)
73.82	5.69	68.13	67.83	-67.12

WORLD INDICES			
Index	Level	YTD Change	
KSE 100	165,686.38	43.92%	
S&P BSE SENSEX INDEX	82,963.80	6.21%	
SET-THAILAND	836.30	-7.72%	
SES All-S'PORE	997.00	14.64%	
FTSE Bursa MALAYSIA	1,614.65	-1.69%	
DOW JONES	46,253.31	8.72%	
S&P 500 INDEX	6,671.06	13.42%	
NASDAQ COMP	22,670.08	17.40%	
FTSE 100 INDEX	9,424.75	15.32%	
NIKKEI 225	48,195.60	20.81%	
HANG SENG-HK	25,799.27	28.61%	

### Portfolio Investment 15-Oct-25

Investors' Type	Gross Buy Rs. In Million	Gross Sell Rs. In Million	Net Buy/Sell Rs. In Million	USD in Million
Foreigners	5,308.94	(6,921.62)	(1,612.68)	(5.70)
NBFC	24.86	(28.16)	(3.30)	(0.01)
Companies	6,484.61	(3,027.58)	3,457.03	12.22
Banks/DFI	17,547.93	(998.33)	16,549.60	58.48
Individuals	55,618.25	(56,528.57)	(910.32)	(3.22)
Mutual Funds	7,202.26	(9,535.03)	(2,332.77)	(8.24)
Others	342.60	(471.13)	(128.52)	(0.45)
INSURANCE COMPANIES	1,415.18	(16,384.69)	(14,969.51)	(52.90)
BROKER PROPRIETARY TRADING	9,954.50	(10,004.03)	(49.53)	(0.18)

Money Market Rates - Offer	
KIBOR (Six Months)	11.18%

### Exchange Rates (Interbank) 15-Oct-25

US Dollar (PKR/₹)	281.12
UK Pound (PKR/£)	375.44
Euro (PKR/€)	327.18

Data Source:  
Pakistan Stock Exchange  
State Bank of Pakistan  
National Clearing Company of Pakistan Limited  
www.bloomberg.com