

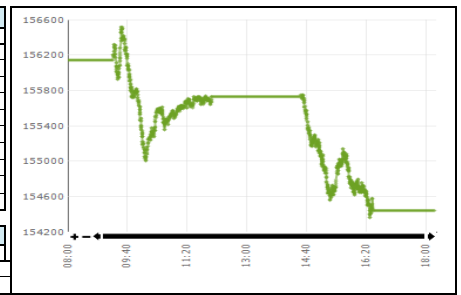


## Daily Stock Market Report 12-Sep-25

### Stock Market Summary

KSE-100		
	12-Sep-25	11-Sep-25
Index	154,439.68	156,141.25
Change	(1,701.57)	(879.55)
Intra Day High	156,519.14	157,816.77
Intra Day Low	154,360.35	156,103.81
Index Band	2,158.79	1,712.96
Ready Turnover (Shares. In Mln)	987.59	1,279.94
Future Turnover (Shares. In Mln)	180.07	203.68
Market. Cap (Rs. In Bln)	18188.39	18335.40
Ready Traded Value (Rs. In Bln)	39.91	50.21
Future Traded Value (Rs. In Bln)	11.55	10.26
Open Interest Future (Rs. In Bln)	49.87	50.74
Gainers	180	225
Losers	263	223
Equal	33	39

Volume Leaders			
Name	Volume	Open Price	Close Price
F. Nat. Equities	61,993,776	9.64	9.95
Agha Steel Ind.	61,302,066	9.77	9.93
Pervez Ahmed Co	47,222,571	2.79	3.17
Fauji Foods Ltd	40,779,681	18.40	18.95
B.O.PunjabXD	39,006,257	18.17	17.81
WorldCall Telecom	32,078,937	1.59	1.58
Pace (Pak) Ltd.	28,959,287	7.28	7.47
Treet Battery Ltd.	27,162,942	14.06	14.06
Aisha Steel Mill	23,190,120	14.08	15.09
Treet Corp	23,062,478	26.28	26.71



Intraday Circuit Breakers		
	12-Sep-25	11-Sep-25
Upper	40	40
Lower	7	7

### Top 10 Index Drivers

KSE - 100			
Name	Volume	Index Points	Close Price
United Bank	1,468,630	(351.94)	363.06
Fauji Fert	604,518	(171.57)	446.99
Engro Holdings	1,557,460	(168.57)	234.75
Hub Power Co.	5,590,120	(105.00)	192.24
Lucky Cement	1,666,181	(95.87)	474.17
Oil & Gas Dev	3,159,599	(68.73)	267.58
Meezan Bank Ltd	525,628	(62.93)	404.15
Maple Leaf	8,399,946	(61.82)	102.35
Mari Energies Ltd.	1,102,278	(59.83)	673.75
Habib Bank	1,149,742	(50.84)	256.74

### Future Market

Volume Leaders			
Name	Volume	Open Price	Close Price
BOP-SEP	14,496,500	18.33	17.94
AGHA-SEP	13,412,000	10.00	10.02
FFL-SEP	11,347,000	18.75	19.05
TREET-SEP	8,329,000	26.99	26.94
PACE-SEP	8,241,000	7.50	7.50
SSGC-SEP	7,943,500	46.40	45.03
CPHL-SEP	7,474,500	103.00	97.91
PAEL-SEP	6,978,000	56.85	54.89
PIBTL-SEP	6,887,000	13.02	12.56
TOMCL-SEP	6,457,500	55.50	57.92

Open Interest		
Name	Volume	Value Rs. In Million
OGDC-SEP	17,226,000	4,640.86
NBP-SEP	22,382,000	4,068.38
PSO-SEP	8,903,000	3,701.96
DGKC-SEP	10,561,000	2,462.09
PPL-SEP	11,450,500	2,184.41
TRG-SEP	33,308,000	2,081.08
GHNI-SEP	1,901,500	1,573.30
PAEL-SEP	25,381,000	1,393.16
CPHL-SEP	13,999,500	1,370.69
SSGC-SEP	28,194,000	1,269.58

### Top 5 Gainers and Losers

Gainers			
Name	Volume	Price Change	Close Price
Khyber Textile	252	167.14	1,838.50
Rafhan Maize	546	123.97	9,643.99
Atlas Honda Ltd	25,229	46.61	1,268.10
Hoechst Pak Ltd	127	35.41	4,038.40
Sitara Chemical	108,755	35.25	985.13

Losers			
Name	Volume	Price Change	Close Price
PIA Holding CompanyB	28	(678.10)	25,310.90
Unilever FoodsXD	5	(247.51)	32,001.00
Nestle Pakistan	305	(161.83)	8,202.06
Bhanero Tex.	309	(22.00)	965.00
Service Ind.Ltd	632	(17.80)	1,382.20

### Margin Trading System

12-Sep-25

MTS Trading Data	
Current Day Turnover (Shares in mln)	18.53
Current Day Value (Rs. in mln)	1,227.02
MTS open Position (Rs in mln)	20,148.40
MTS Release Position (Rs in mln)	1,624.62
MTS unrelease Position (Rs in mln)	19,034.50
Avg Rate	16%

Volume Leaders			
Name	Volume	Value Rs. In Million	Avg Rate
BOP	2,720,393	41.19	16%
TREET	1,897,860	43.02	16%
PAEL	1,822,204	84.49	14%
NBP	1,639,059	251.53	17%
KEL	1,164,903	5.31	17%

Open Interest		
Scrip	Volume	Value Rs. In Million
PSO	6,042,281	2,096.49
NBP	12,923,050	1,791.87
OGDC	6,038,984	1,366.46
PPL	7,701,564	1,225.68
PAEL	21,646,458	974.71

### International Commodity Prices

Contract Name	Price	Change in Price USD
Gold 100 OZ (USD/t oz)	3,644.76	(9.49)
COTTON (USD/lb)	66.83	0.31
WTI CRUDE (USD/bbl)	63.06	1.20
SILVER (USD/t oz)	42.80	0.16

### Daily Position of Special Convertible Rupee Accounts (USD in Mn) August 29, 2025

Inflow	Outflow	Net	Current Month Cumulative Net Flow	Total Yearly (July 2025 to-date)
11.46	6.73	4.74	(25.01)	(70.24)

### WORLD INDICES

Index	Level	YTD Change
KSE 100	154,439.68	34.15%
S&P BSE SENSEX INDEX	81,927.78	4.89%
SET-THAILAND	837.16	-7.62%
SES All-S' PORE	997.96	14.75%
FTSE Bursa MALAYSIA	1,600.13	-2.57%
DOW JONES	45,834.22	7.73%
S&P 500 INDEX	6,584.29	11.95%
INSDAG COMP	22,141.10	14.66%
FTSE 100 INDEX	9,283.29	13.58%
NIKKEI 225	44,768.12	12.22%
HANG SENG-HK	26,463.48	31.92%

### Portfolio Investment 12-Sep-25

Investors' Type	Gross Buy Rs. In Million	Gross Sell Rs. In Million	Net Buy/Sell Rs. In Million	USD in Million
Foreigners	3,218.85	(2,936.39)	282.46	0.99
NBFC	23.65	(30.96)	(7.31)	(0.03)
Companies	2,193.04	(2,208.07)	(15.03)	(0.05)
Banks/DFI	2,868.09	(1,513.49)	1,354.60	4.77
Individuals	38,073.58	(36,373.96)	1,699.62	5.98
Mutual Funds	1,323.97	(3,963.72)	(2,639.75)	(9.29)
Others	133.90	(433.79)	(299.90)	(1.06)
INSURANCE COMPANIES	396.75	(321.09)	75.66	0.27
BROKER PROPRIETARY TRADING	5,343.64	(5,794.00)	(450.36)	(1.59)

### Exchange Rates (Interbank) 12-Sep-25

US Dollar (PKR/£)	281.55
UK Pound (PKR/£)	381.56
Euro (PKR/€)	330.40

**Data Source:**  
Pakistan Stock Exchange  
State Bank of Pakistan  
National Clearing Company of Pakistan Limited  
www.bloomberg.com